













CENTRAL R. R. of N. J. (Anthracite coal used exclusively, insuring healthiness and comfort.) Time-table in effect May 10, 1897.

DECORATION DAY

MAY - 30th - 1897

THE BLUE AND THE GRAY.

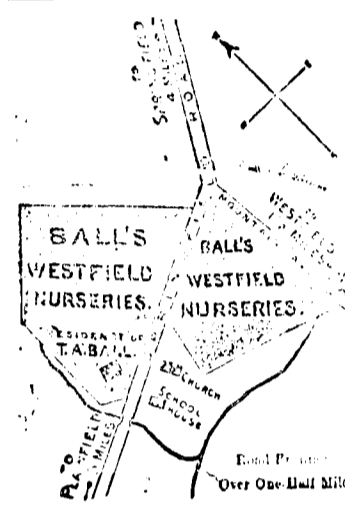
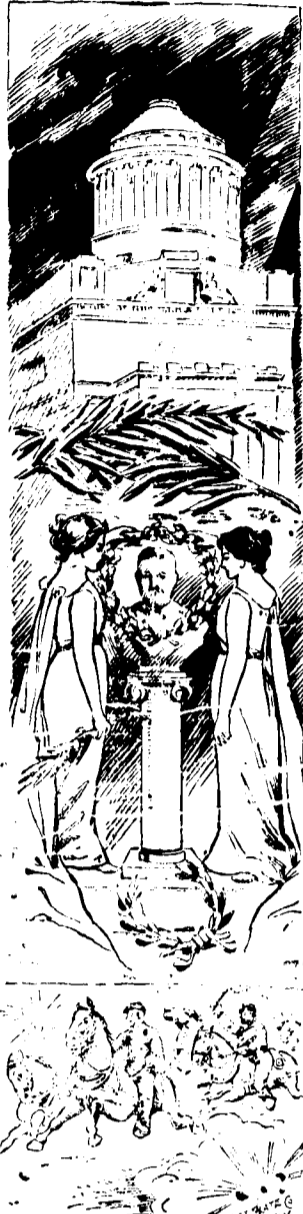
By the flow of the inland river, Whence the fleets of iron have fled, Where the blades of grave grass quiver, Asterop are the ranks of the dead;

These in the robes of glory, Those in the gloom of defeat, All with the battle-blood gory, In the dusk of eternity meet;

From the silence of sorrowful hours The desolate mourners go, Lovingly laden with flowers, Alike for the friend and the foe;

So with an equal splendor The morning sun-rays fall, With a touch, impartially tender, On the blossoms blooming for all;

Sadly, but not with upparting, The generous deed was done; In the stern of the years that are fading, No braver battle was won;



THEODORE A. BALL, Westfield Nurseries. Fruit, Shade and Ornamental TREES, And all Hardy Plants for Lawn and Garden.

Catalogues Free. Furniture, Carpets, Oil Cloth and Linoleum Parlor Suits, Chamber Suits, Iron and Brass Beds, Baby Carriages, Refrigerators, BEDDING, RUGS, MATTINGS.

T. KELLY 263 Sixth Ave. 104-106 W. 17th St. N. Y. FOR BARGAINS IN REAL ESTATE

THE S. D. DRAKE REAL ESTATE CO., Ross Building, Bound Brook, N. J. Bennett Building, New York.

L. DUGH, Broad St., near Prospect. Philadelphia Ice Cream Fruit, Confectionery, Cigars. Strawberry Crush Soda, Fresh every day.

Mrs Lillian W. Thornton Would like the patronage of any ladies in Westfield who would like first class dress making done at her residence.

FALL OF RICHMOND.

THE FORTY DAYS FIGHT WHICH ENDED AT APPOMATTOX.

Greatest of All Campaigns, in Which Both Armies Fought With a Fury Born of the Knowledge That One Cause or the Other Meant Final Defeat. With the spring of 1862 the armies were set in motion across half a continent, and the iron leaders grasped the confederacy by the throat.

It was literally a ring of fire that was drawn about the confederacy, when at last the northern columns got under way. Sherman led out from Tennessee 60,000 men, the flower of the Western armies. His campaign against Johnston through Georgia and his march to the sea gave to the literature of the rebellion its most romantic episode.

Forty Days' Fight.

The forty days' battles, bloody beyond description, contested amid the gloom of the forest and the miasma of the swamps, made the pulse of the world stand still with horror. Grant lost 55,000 men—killed, wounded and missing. Lee had fought from behind breastworks, on ground of his own choosing, and had retired always on



PRESIDENT LINCOLN, 1864.

Interior lines. His losses were less, but they were too great for the waning confederacy ever to restore. The enlistments made to replace them, as Butler sententiously remarked, "robbed the cradle and the grave." The fifth advance upon Richmond, with such bloody and indecisive incidents as the two days' fighting in the Wilderness proper, and the engagements at Spotsylvania Court House, on the North Anna, and at Cold Harbor, was successful because it ended with the Federal lines drawn about Petersburg instead of with a confederate army menacing Washington, and because the Army of Northern Virginia was never able to take the field again after the battering it had received while contesting that advance.

The Right Writer THE "WILLIAMS" TYPEWRITER.



A few of its leading features: Visible Writing: No lifting of Carriage. No Ribbons: Money saved and bother done away with. Direct Inking: Clean, clear cut writing. Idle Roller: Writing on ruled lines and printed forms. Compactness and Portability: Weight 15 pounds. Better Manifolding: More carbon copies. And "There are others;" write for our Illustrated Catalogue.

THE WILLIAMS TYPEWRITER CO. HOWARD McDOUGALL, Agent, 273 Broadway, cor. Chambers St., N. Y. City.

C. E. PEARSALL & CO. REAL ESTATE FOR SALE AND TO RENT. RENTS COLLECTED.

Fire Insurance placed in largest Companies. Place Your Property on Our Lists. C. E. PEARSALL & Co., Standard Building, Westfield.

Kranich & Bach Pianos Unsurpassed for beauty of tone, perfectly even and delightful touch and artistic finish. Endorsed by leading musicians all over the world. Also the celebrated Doll, Schubert, Stodard and Starr Pianos, Wilcox & White and Mason & Hamlin Organs. Old instruments taken in exchange and full value allowed. Rentals and Tuning. RICHARD MENZEL, Successor to F. S. TAYLOR 322 W. Front St., Plainfield, N. J.

The Pathlight '97 lights the way and stays lighted. All brass, nickel-plated—no tin; outside oil-filler; cotton packed oil fount; double convex ground photolens; burns kerosene, throws a light 60 ft. and weighs but 12 ounces. Three years a leader, and three years' improvements now added. Absolutely the handsomest and best bicycle lamp ever made. Sold by all leading dealers. THE PLACE & TERRY MFG. CO., 247 Centre Street, New York. See our new, cheaper lamp—the "Scorcher."

J. WARREN BROWN, Late of C. E. & J. W. Brown. Established 1836. Window Shades and Awnings of every description. First Class Work. Best of References. Honest Value. Estimates Furnished. Residence: Dudley and Lawrence Aves., Westfield, And 144 W. 23rd St., N. Y.

JOHN ALBRECHT, FIRST CLASS CUSTOM TAILOR. Repairing, Cleaning and Pressing. DONE AT MODERATE PRICES. SUITS TO ORDER A SPECIALTY. PERFECT FIT GUARANTEED. Perry Building, Broad Street, WESTFIELD, N. J.

